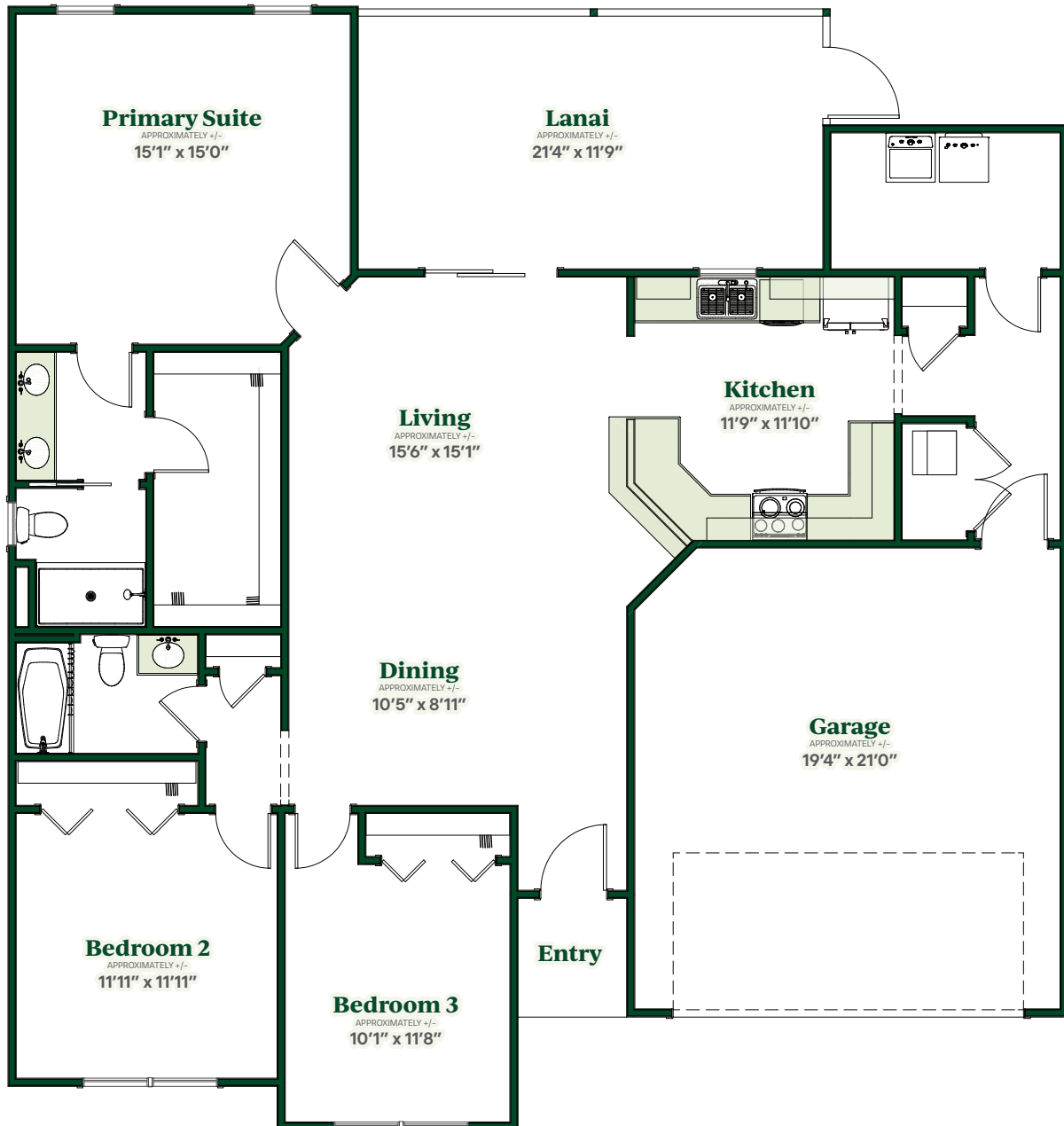


Anchor

COTTAGE HOME



3 Beds | 2 Baths | 2242 Total Sq. Ft. | 1537 Living Sq. Ft.
2-Car Garage | Frame Construction



The Villages®

Cottage Home

SERIES

Interior

- Central Air Conditioning and Heat
- Water Heater
- Smoke Detection System
- Wiring for Data and Cable
- Ceiling Fan Outlets in Selected Rooms
- Interior Light Fixtures
- Single Pole Switches
- Lighting and Fans
- Interior Doors
- Wood Cabinetry
- Quartz Countertops

Kitchen

- Stainless Steel Appliances: Refrigerator, Range, Microwave Over Range, and Dishwasher
- Garbage Disposal
- Wood Cabinets
- Double Bowl Sink with Faucet

Bath

- Bathtubs, Sinks, and Toilets
- Faucets and Shower Accessories
- Tile Walls Showers and Tubs
- Towel Bars and Tissue Holders
- Bath Exhaust Fans

Structural

- Frame Construction with Vinyl Siding
- House Wrap and R-11 Wall Insulation

Exterior

- Architectural Shingles
- R-38 Ceiling Insulation
- Insulated Windows
- Fiberglass Entry Doors
- Screen Lanai
- Garage Door with Electric Opener
- Underground Utilities
- Push Button Door Chime
- Weatherproof Electrical Outlets
- Exterior Hose Bib
- Landscaping with WIFI Capable Controller and Rain-Click Sensor Irrigation System
- St. Augustine Grass
- Lighting and Fans
- Concrete Driveway and Sidewalk
- Covered Entryway
- Exterior Lighting at Entry

A variety of popular features available in some homes:

- Tile Flooring
- Window Treatments
- Ceiling Fans
- Golf Car Garage
- Washer/Dryer

The Villages®

352-753-6700 | TheVillages.com
1000 Lake Sumter Landing | The Villages, FL



©2023 Holding Company of The Villages, Inc. All Rights Reserved. THE COMPLETE OFFERING TERMS ARE IN A PLAN AVAILABLE FROM SPONSOR, FILE NO. H88-0051. The Villages is a community for persons age 55 or better. This advertisement is not intended as an offering in any jurisdiction where prior qualification is required, and no marketing or sales literature will be forwarded to or disseminated in such states unless we have met such qualifications. Prices and availability subject to change without notice. Floorplans and renderings are artists' conceptions and may differ from finished homes. TV751_0725; 24.2