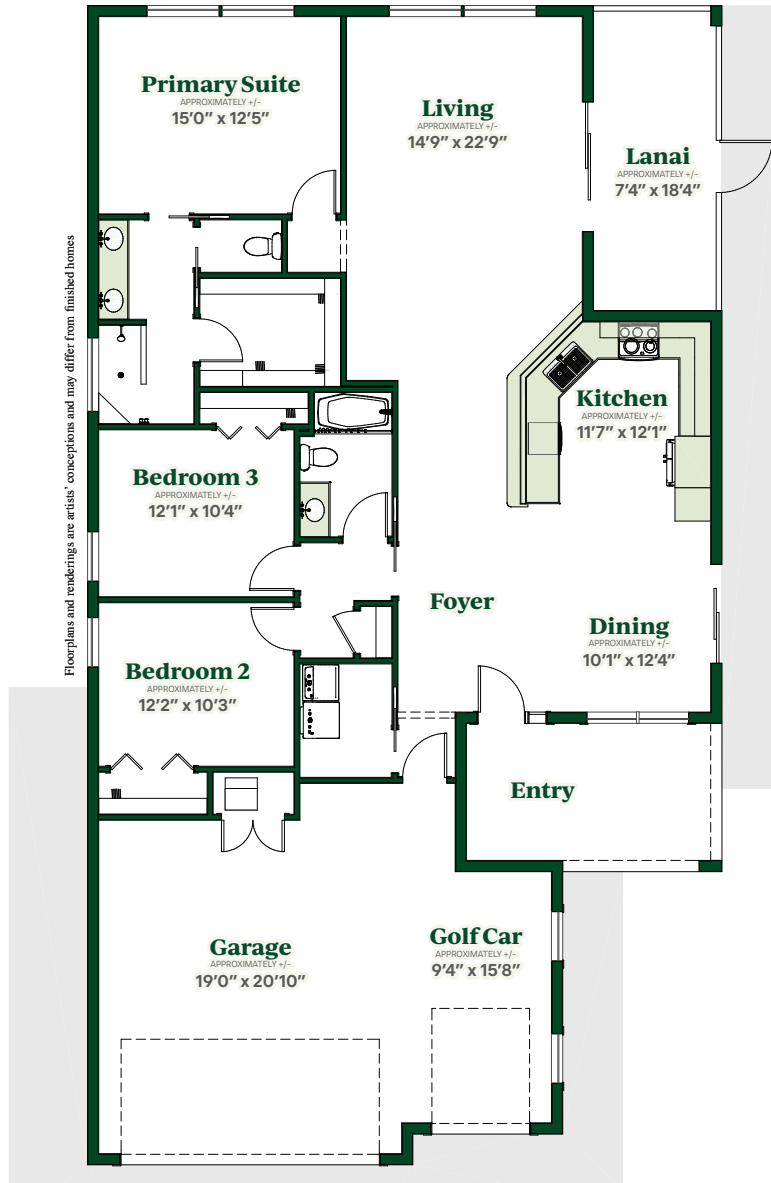


Avondale

COURTYARD VILLA



3 Beds | 2 Baths | 2633 Total Sq. Ft. | 1705 Living Sq. Ft.
2-Car + Golf Car Garage | Concrete Construction



The Villages®

Courtyard Villa SERIES

Interior

- Central Air Conditioning and Heat
- Water Heater
- Smoke Detection System
- Wiring for Data and Cable
- Ceiling Fan Outlets in Selected Rooms
- Interior Light Fixtures
- Rocker Switches
- Interior Doors
- Lighting and Fans
- Wood Cabinetry

Kitchen

- Stainless Steel Appliances: Refrigerator, Range, Microwave Over Range, and Dishwasher
- Garbage Disposal
- Single or Double Bowl Sink with Faucet
- Wood Cabinets

Bath

- Bathtubs, Sinks, and Toilets
- Faucets and Shower Accessories
- Ceramic Tile Shower - Master Bath
- Molded Tub/Shower - Guest Bath
- Towel Bars and Tissue Holders
- Bath Exhaust Fans

Structural

- Concrete Construction with Painted Cementitious Finish and Interior Foam Board Insulation

Exterior

- Architectural Shingles
- R-38 Ceiling Insulation
- Insulated Windows
- Fiberglass Entry Doors
- Screen Lanai
- Garage Door with Electric Opener
- Underground Utilities
- Push Button Door Chime
- Weatherproof Electrical Outlets
- Exterior Hose Bibs
- Landscaping with WIFI Capable Controller and Rain-Click Sensor Irrigation System
- St. Augustine Grass
- Concrete Driveway and Sidewalk
- Covered Entryway
- Lighting and Fans
- Exterior Lighting at Entry

A variety of popular features available in some homes:

- Tile Flooring
- Ceiling Fans
- Window Treatments
- Cathedral/Volume Ceilings
- Washer/Dryer
- Quartz Countertops

The Villages[®]

352-753-6700 | TheVillages.com
1000 Lake Sumter Landing | The Villages, FL

